



#433A

Meat Tenderizer Attachment

Important:

Read these instructions before operating meat tenderizer.

1. Remove the tenderizer attachment from the motor when not in use.
2. Never operate unit without the cover being in place. The rolling action of the knives could pull fingers and hands into the knives and cause serious injury.
3. Never leave tenderizer unattended when in use or plugged in.
4. **Keep out of reach of children.**
5. Drop meat through the opening of the cover. DO NOT attempt to force meat into the opening. Rolling action of the knives will carry appropriately sized portions of meat into the unit.
6. Use boneless cuts of meat only. Meat should not exceed $\frac{3}{4}$ " in thickness. Remove gristle before tenderizing to eliminate clogging or stalling. To experience the maximum tenderness, run meat through tenderizer twice at 90 degree angles. KEEP HANDS A SAFE DISTANCE FROM THE EXPOSED BLADES ON THE BOTTOM OF THE UNIT.

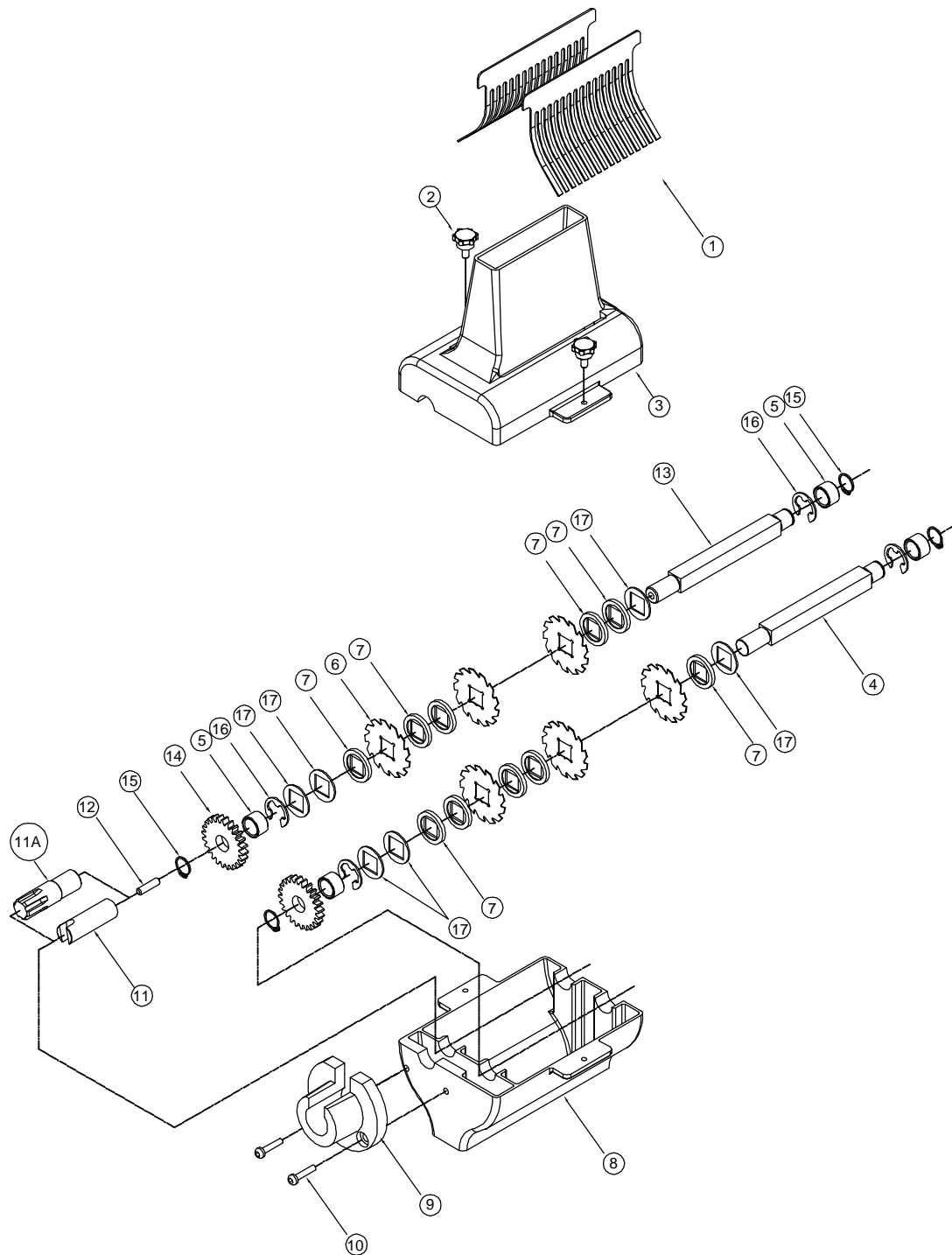
To install tenderizer attachment:

1. The tenderizer comes with a male splined drive shaft (#11A) installed. If the grinder has a female splined drive shaft to match, then proceed to step 3. If the grinder has a drive shaft that will accept the slotted drive shaft adapter that is included, then it will be necessary to change the drive shaft adapter on the tenderizer. (Newer models will have a combination drive shaft that will attach to both grinders)
2. To change the drive shaft adapter:
 - a. Remove the two thumbscrews (#2) that connect the upper(#3) and lower cases (#8).
 - b. Remove the roller with cutters that has the drive shaft adapter (#11A) attached. Carefully place the gear portion of the drive shaft in a vise.
 - c. Grasp the end of the drive shaft adapter with a pair of pliers and remove it by turning to the left (counter clockwise). If the setscrew (#12) comes out with the shaft, unscrew it and thread it back into the cutter shaft.
 - d. Thread the "slotted drive shaft adapter" on to the setscrew, and then reassemble the unit.
3. Align the drive shaft of the grinder with the drive shaft of the tenderizer and tighten securely.
4. Insert the 2 meat combs (#1) into the slots in the top of the upper housing (#3) – one comb on each side of the chute.

To Clean:

1. Turn unit off and remove plug from wall outlet.
2. Remove tenderizer attachment from grinder by loosening star bolt (#15).
3. Remove meat combs (#1).
4. Remove thumbscrews (#2).
5. Remove upper case (#3).
6. Remove the drive and driven cutter shafts.
7. Wash with hot soapy water. Rinse and dry parts thoroughly. (Since meat will ultimately get between the knives and the spacers, occasionally the drive and driven units should be disassembled, and each piece washed thoroughly. Start disassembly by removing the C-Clip (#15) on the end opposite the gear. When reassembling the drive unit, start with a single spacer, and end with a two spacers. When reassembling the driven shaft, start with a two spacers, and end with a single spacer. Also note that each cutter blade has a single notch in the square portion. Make sure these notches lineup on the shaft. Doing this will assure that the blades all line up correctly.) A video of the reassembly process may be viewed at the lemproducts.com.
8. To reassemble,
 - o Put the drive cutter shaft (#13) roller into position first.
 - o Put the driven cutter shaft (#4) roller into position next.
 - o Make sure the gears (#14) are properly aligned and mesh.
 - o Replace upper case (#3) and secure with thumbscrews (#2).
 - o

LEM Products ♦ 109 May Drive ♦ Harrison, OH 45030
Toll Free: 877-536-7763 ♦ www.lemproducts.com



ITEM	PART #	QTY	DESCRIPTION
1	433A-1	2	COMB
2	433A-2	2	THUMB SCREW
3	433A-3	1	CASE-UPPER
4	433A-4	1	DRIVEN CUTTER SHAFT
5	433A-5	4	BRASS SLEEVE
6	433A-6	30	KNIFE
7	433A-7	62	SPACER
8	433A-8	1	CASE-LOWER
9	433A-9	1	HUB
10	433A-10	2	HUB SCREW
11	433A-11	1	DRIVE SHAFT ADAPTER SLOTTED
11A	433A-11A	1	DRIVE SHAFT ADAPTER SPLINED
12	433A-12	1	CONNECT SCREW
13	433A-13	1	DRIVE CUTTER SHAFT
14	433A-14	2	GEAR
15	433A-15	4	C RING
16	433A-16	4	E RING
17	433A-17	6	STAINLESS STEEL WASHER