

**IMPORTANT WARRANTY INFORMATION PLEASE READ
FILL OUT AND RETURN ENCLOSED WARRANTY CARD**

THIS WARRANTY COVERS
Craftsmen Tenderizer #168SS

THE WARRANTY IS EXTENDED TO THE ORIGINAL PURCHASER ONLY.

WARRANTY DURATION: This product is warranted to the original purchaser for a period of one (1) year from the original purchase date. **EACH UNIT COMES WITH A WARRANTY CARD, WHICH MUST BE FILLED OUT COMPLETELY AND RETURNED IMMEDIATELY, WITH A COPY OF THE PURCHASING RECEIPT. FAILURE TO RETURN YOUR WARRANTY CARD WILL LIMIT WARRANTY TO 90 DAYS WITH PROOF OF PURCHASE.**

WARRANTY COVERAGE: This warranty covers only the product and its specific parts, not food or other products processed in it. This product is warranted against defective materials or workmanship. The warranty is void if the product has been damaged by accident, misuse, neglect, modification or improper service or repairs by unauthorized personnel. It is also void if damaged in shipment or by other causes not arising out of defects in the materials or workmanship. This warranty does not extend to any units which have been in violation of written instructions furnished. This warranty covers only the product and its specific parts, not food or other products processed in it.

WARRANTY DISCLAIMERS: This warranty is in lieu of all warranties expressed or implied, and no representative or person is authorized to assume any other liability in connection with the sale of our products. There shall be no claims for defects or failure of performance under any theory of sort, contract or commercial law including, but not limited to negligence, gross negligence, strict liability or breach of contract. The manufacturer declines all responsibility for damage to persons, things or animals arising from the failure to comply with the norms contained in this manual. The manufacturer reserves the right to make modifications at anytime to the models while maintaining the main characteristics described herein. The manufacturer also declines all responsibility for any errors in compiling this manual.

WARRANTY PERFORMANCE: During the above one year warranty period, a product with a defect will either be repaired or replaced after the product has been inspected by an LEM Service Technician. LEM RESERVES THE RIGHT TO REFUSE WARRANTY PERFORMANCE OR PRODUCT EVALUATION UNLESS THE ORIGINAL SALES RECEIPT OR THE WARRANTY CARD IS ON FILE. The repaired product will be in warranty for the balance of the one year warranty period. No charge will be made for such repair or replacement.

IMPORTANT NOTICE: If any parts are missing or defective, please contact our Customer Service Department for assistance at 877-536-7763. (M-F 8:30am to 4:30pm EST) **DO NOT RETURN TO THE STORE WHERE THE PRODUCT WAS PURCHASED.**

LEM PRODUCTS MERCHANDISE RETURN POLICY WARRANTY SERVICE:

To obtain service under terms of this warranty, please contact us at 877-536-7763 to obtain authorization prior to returning the merchandise. No merchandise will be accepted without prior authorization. Please return the product prepaid in the original packaging if possible, enclose a copy of your receipt, (Keep a copy of your proof-of-purchase for your records.) and include a written explanation of the issue. Ship to LEM Products, 4440 Muhlhauer Rd., Suite 300, West Chester, OH 45011. LEM Products is not responsible for damage incurred in shipping, make certain to pack product properly. Return shipping charges are the responsibility of the purchaser. Packages returned to LEM should be insured for the value of the product to cover any damages that may occur during shipping.

Revised September 30, 2015

THE LEADER IN GAME PROCESSING



CRAFTSMEN TENDERIZER

USE & MAINTENANCE

168SS



**1 YEAR
WARRANTY**

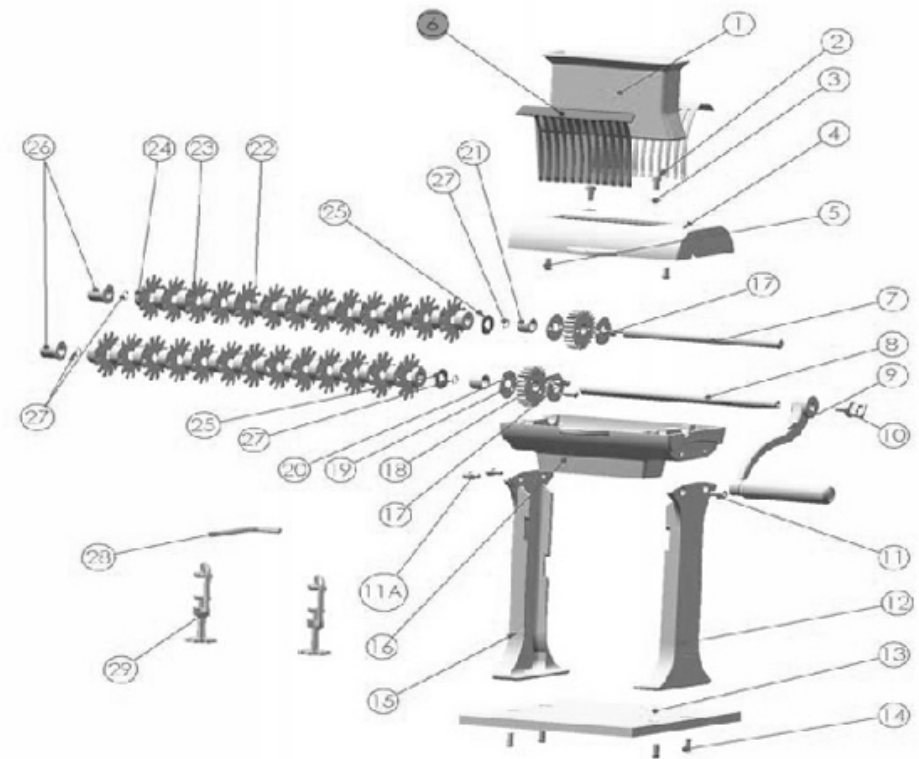
CLEANING, ASSEMBLY & PROPER USE

ASSEMBLY:

- Attach both legs (#12, #15) to the base (#13). Make sure the counter-sunk screw holes in the legs match up with the holes in the poly mounting board.
- Using the Allen head wrench, attach the legs to the poly board with the base screws. (#14)
- Attach the lower housing (#16) to the legs. Make sure the drive shaft hole is toward the right leg. Use the shorter of the Allen head screws (#11) on the right side. The longer screws (#11A) go on the left side.
- Attach the meat chute (#1) to the upper housing (#4) with the meat chute screws (#2) and washers (#3).
- Place the drive roller (#8) into the lower housing (#16) so that the handle end sticks out the hole on the right side.
- Attach the upper housing (#4) to the lower housing (#16) with the upper housing screws (#5). The hole in the side of the upper housing will cover the extended driven roller shaft used for attaching the crank handle.
- Place the combs (#6) in the appropriate L or R side of the opening in the upper housing and attach the handle components (#9, #10).

DISASSEMBLY & CLEANING INSTRUCTIONS:

- Keep children at a safe distance from machine while cleaning.
- Remove the thumbscrew (#10) from the handle (#9).
- Remove handle from the drive shaft (#8).
- Remove the combs (#6) from the upper housing by lifting up on combs.
- Remove the two Allen head upper housing screws (#5) from the upper housing (#4).
- Remove the upper housing (#4). Warning: this will expose the blade rollers. Take care when handling the blade rollers. Protective gloves are recommended.
- Remove the drive shaft components by simultaneously lifting up on each end of the blade roller to separate them from the lower housing (#16). Remove one drive shaft at a time.
- To disassemble the tenderizing rollers remove the nylon cap (#26) and clip (#27) on the end of the shafts and slide the parts off the shafts (#7 & #8). Be careful not to damage the nylon cap and clip when removing.
- Wash all parts thoroughly with hot water and mild dishwashing liquid. A long bristle brush is recommended for cleaning the assembled blade rollers. Take extra care when handling the blade rollers. Protective gloves are recommended.
- Dry parts thoroughly before re-assembling.



STAINLESS STEEL TENDERIZER
MODEL #168SS

#	DESCRIPTION	QTY	#	DESCRIPTION	QTY
1	Meat Chute	1	17	Roller Assembly Screws	4
2	Meat Chute Screws	2	18	Gear Washer (1)	2
3	Washers	2	19	Gear	2
4	Upper Housing	1	20	Gear Washer (2)	2
5	Upper Housing Screws	2	21	Bushing	2
6	Meat Combs (Sold as a set)	2	22	Wide Spacer	26
7	Driven Shaft	1	23	Blades	26
8	Drive Shaft	1	24	Narrow Spacer	2
9	Handle	1	25	Stainless Steel Washer	2
10	Handle Screw	1	26	Nylon Cap	2
11	Short Allen Screws	2	27	Spring Clip	2
12	Long Allen Screws	2	28	Allen Wrench	1
13	Right Leg	1	29	Clamps	2
14	Base Screws	4	30	Driven Shaft Assembly (not shown)	1
15	Left Leg	1	31	Drive Shaft Assembly (not shown)	1
16	Lower Housing	1			