

**IMPORTANT WARRANTY INFORMATION PLEASE READ  
FILL OUT AND RETURN ENCLOSED WARRANTY CARD**

THIS WARRANTY COVERS:  
**Roots And Harvest® 1012-Walnut Cracker**  
THE WARRANTY IS EXTENDED TO THE ORIGINAL PURCHASER ONLY

**WARRANTY DURATION:** This product is warranted to the original purchaser for a period of one (1) year from the original purchase date. **EACH UNIT COMES WITH A WARRANTY CARD, WHICH MUST BE FILLED OUT COMPLETELY AND RETURNED IMMEDIATELY, WITH A COPY OF THE PURCHASING RECEIPT. FAILURE TO RETURN YOUR WARRANTY CARD WILL LIMIT WARRANTY TO 90 DAYS WITH PROOF OF PURCHASE.**

**WARRANTY COVERAGE:** This product is warranted against defective materials or workmanship. The warranty is void if the product has been damaged by accident, misuse, neglect, modification or improper service or repairs by unauthorized personnel. It is also void if damaged in shipment or by other causes not arising out of defects in the materials or workmanship. This warranty does not extend to any units which have been in violation of written instructions furnished. This warranty covers only the product and its specific parts, not food or other products processed in it.

**WARRANTY DISCLAIMERS:** This warranty is in lieu of all warranties expressed or implied, and no representative or person is authorized to assume any other liability in connection with the sale of our products. There shall be no claims for defects or failure of performance under any theory of sort, contract or commercial law including, but not limited to negligence, gross negligence, strict liability or breach of contract. The manufacturer declines all responsibility for damage to persons, things or animals arising from the failure to comply with the norms contained in this manual. The manufacturer reserves the right to make modifications at anytime to the models while maintaining the main characteristics described herein. The manufacturer also declines all responsibility for any errors in compiling this manual.

**WARRANTY PERFORMANCE:** During the warranty period, a product with a defect will either be repaired or replaced after the product has been inspected by a Roots and Harvest Service Technician. **ROOTS AND HARVEST RESERVES THE RIGHT TO REFUSE WARRANTY PERFORMANCE OR PRODUCT EVALUATION UNLESS THE ORIGINAL SALES RECEIPT OR THE WARRANTY CARD IS ON FILE.** The repaired product will be in warranty for the balance of the warranty period. No charge will be made for such repair or replacement.

**IMPORTANT NOTICE:** If any parts are missing or defective, please contact our Customer Service Department for assistance at 877-509-3457 (M-F 8:30am to 4:30pm EST). **DO NOT RETURN TO THE STORE WHERE THE PRODUCT WAS PURCHASED.** Roots and Harvest is not responsible for, or will not cover under warranty, missing or damaged parts on discounted/clearance, resale or final sale items where the seller may not be able to guarantee full functionality or completeness of the unit.

**ROOTS AND HARVEST MERCHANDISE RETURN POLICY WARRANTY SERVICE:** To obtain service under terms of this warranty, please contact us at 877-509-3457 to obtain authorization prior to returning the merchandise. No merchandise will be accepted without prior authorization. Prior to returning the product for warranty repair the product must be thoroughly cleaned and free from any food particles or other debris. Failure of the purchaser to comply with this standard may result in the unit being returned without repair. In some cases, a \$50 cleaning surcharge may apply. Please return the product prepaid in the original packaging if possible, enclose a copy of your receipt, (keep a copy of your proof-of-purchase for your records) and include a written explanation of the issue. Ship to Roots and Harvest, 4440 Muhlhauer Road, Suite 300, West Chester, OH 45011. Roots and Harvest is not responsible for damage incurred in shipping, make certain to pack product properly. Return shipping charges are the responsibility of the purchaser. Packages returned to Roots and Harvest should be insured for the value of the product to cover any damages that may occur during shipping.

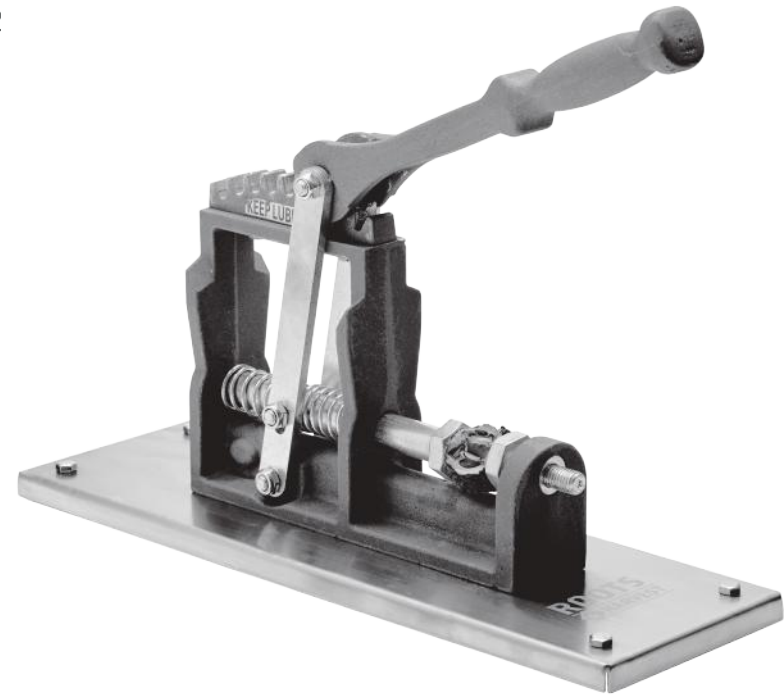
Revised July 12, 2020



## WALNUT CRACKER

### USE & MAINTENANCE

#1012



**1 YEAR  
WARRANTY**

**! CAUTION !**

**Avoid contacting moving parts. Keep hands, fingers clear of the nut cracker when in use.  
Serious injury could occur.**

## ⚠ GENERAL WARNINGS AND SAFETY INFORMATION ⚠

### Save these instructions.

1. It is important to read and understand all of the instructions and safeguards prior to use.
2. Always ensure the appliance is properly assembled and safely set up before use.
3. The manufacturer declines any responsibility in the case of improper use of this product. Improper use of this product voids the warranty.
4. The appliance is designed exclusively for domestic use and not for commercial purpose.
5. **Caution:** This appliance is not recommended for use near or by children or persons with certain disabilities. Set up and store the appliance in a secure dry location out of reach of children.
6. Thoroughly hand-wash all appliance parts and wipe down the exterior with warm soapy water prior to use. Dry thoroughly. **NOT DISHWASHER SAFE. DISCOLORATION MAY OCCUR.**
7. Use the appliance with supplied accessories only. Warning: the use of accessories or attachments not recommended or sold by the manufacture may cause injury, damage to personal property and may void your warranty.
8. **WARNING:** Do not use while under the influence of alcohol or prescription or non-prescription drugs as these may impair user's ability to properly assemble or safely operate the appliance.
9. Tie back loose hair and clothing. Roll up long sleeves. Remove neck ties, rings, watches, bracelets or other jewelry before operating the appliance.
10. Keep your work area clean and well lit. Cluttered work benches and dark work areas may cause accidents or injury.
11. Failure to follow warnings and a safety information could result in death serious bodily injury and or property loss.
12. **WARNING:** To avoid dangers of suffocation, keep all plastic bags away from babies and children.
13. Use appliance only on a level, stable surface to prevent tipping. Never move appliance while in use.
14. Avoid contacting moving parts. Keep hands, fingers clear of the nut cracker when in use. Serious injury could occur.
15. **CAUTION:** Never put your fingers near the nut, or comb/rocker when the handle is in use.
16. **WARNING:** The warnings, cautions and instructions discussed in this instruction manual cannot cover all possible conditions or situations that could occur. It must be understood by the operator that common-sense must be used.
17. **SAVE THESE INSTRUCTIONS.**

## USE

Prior to use lubricate the gear with food grade grease or petrolatum jelly.

Relax the lever handle so it rests at the back of the nut cracker.

Select nut to be cracked.

Place nut between clamping screws and secure nut by adjusting screws in or out.

Move handle forward and slide into gear and then pull handle down over nut to crack.

**NOTE: To keep meat of nut intact press handle to crack nut and then turn nut and repeat.**

**Caution:** Cracking the nut too quickly will cause the nut shell to burst and possibly fly about. It is recommended to wear safety glasses when using the nut cracker. You can place a cloth over the nut to keep shells from flying. Keep hands and fingers clear of nut when cracking.

- Works on all nuts, hard and soft shell up to 2.5" diameter or smaller
- 4 Rubber feet to hold the unit steady
- Simple powerful gear lever action
- Easily cracks shells and leaves inner meat intact
- Cast aluminum mounted on stainless steel base
- No assembly required

## ⚠ CAUTION ⚠

Tie back loose hair and clothing. Roll up long sleeves. Remove neck ties, rings, watches, bracelets or other jewelry before operating the appliance.

## CLEANING

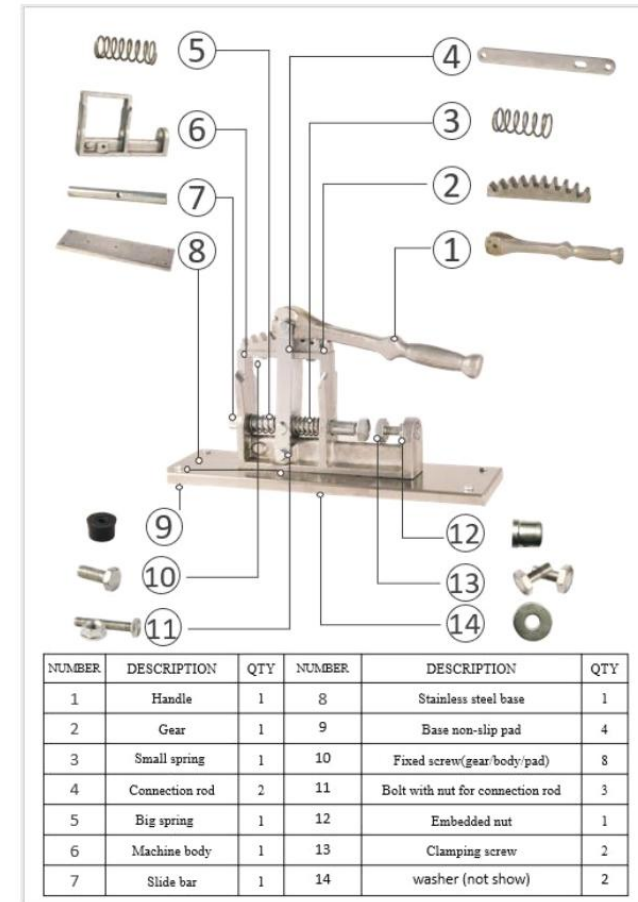
**DO NOT SOAK OR PUT IN THE DISHWASHER- DISCOLORATION WILL OCCUR.**

Simply wipe with a damp towel or use a paint brush to brush away the shell and nut fragments.

Prior to first use it is best to hand wash in hot soapy water and dry thoroughly.

After every cleaning and before use put some food grade grease or Vaseline lubricant on the comb/rocker where the handle will pivot. (You can purchase food grade grease at LEM Products 877.536.7763 [www.lemproducts.com](http://www.lemproducts.com)).

## PARTS



## ⚠ CAUTION ⚠

Avoid contacting moving parts. Keep hands, fingers clear of the nut cracker when in use. Serious injury could occur.